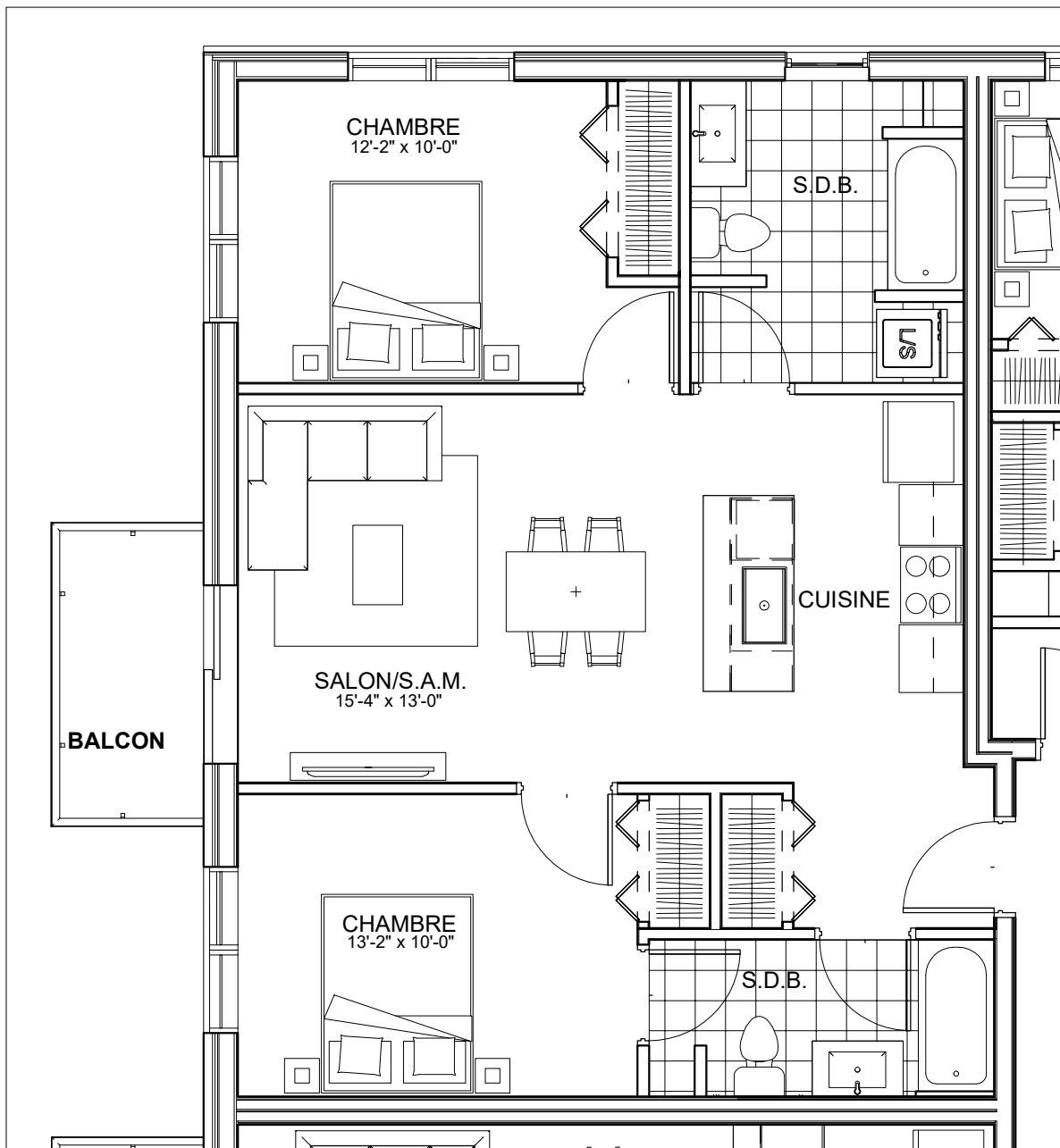




C É L E S T E

APPARTEMENTS LOCATIFS MODERNES

B215



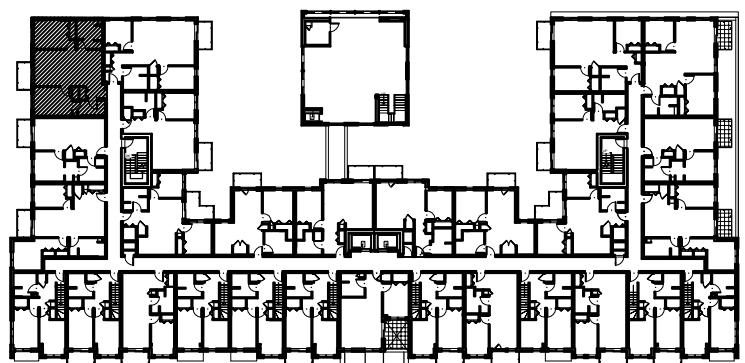
**INCLUS\***

- 5 APPAREILS ELECTROMENAGERS
- STORES
- AIR CLIMATISE

\*CHOIX DU PROPRIETAIRE

**OPTIONS NON INCLUSES**

- STATIONNEMENT INTERIEUR 75\$ X 12
- GYM / LOGE 15\$ X 12
- CASIER 12\$ X 12



**NOTES:**