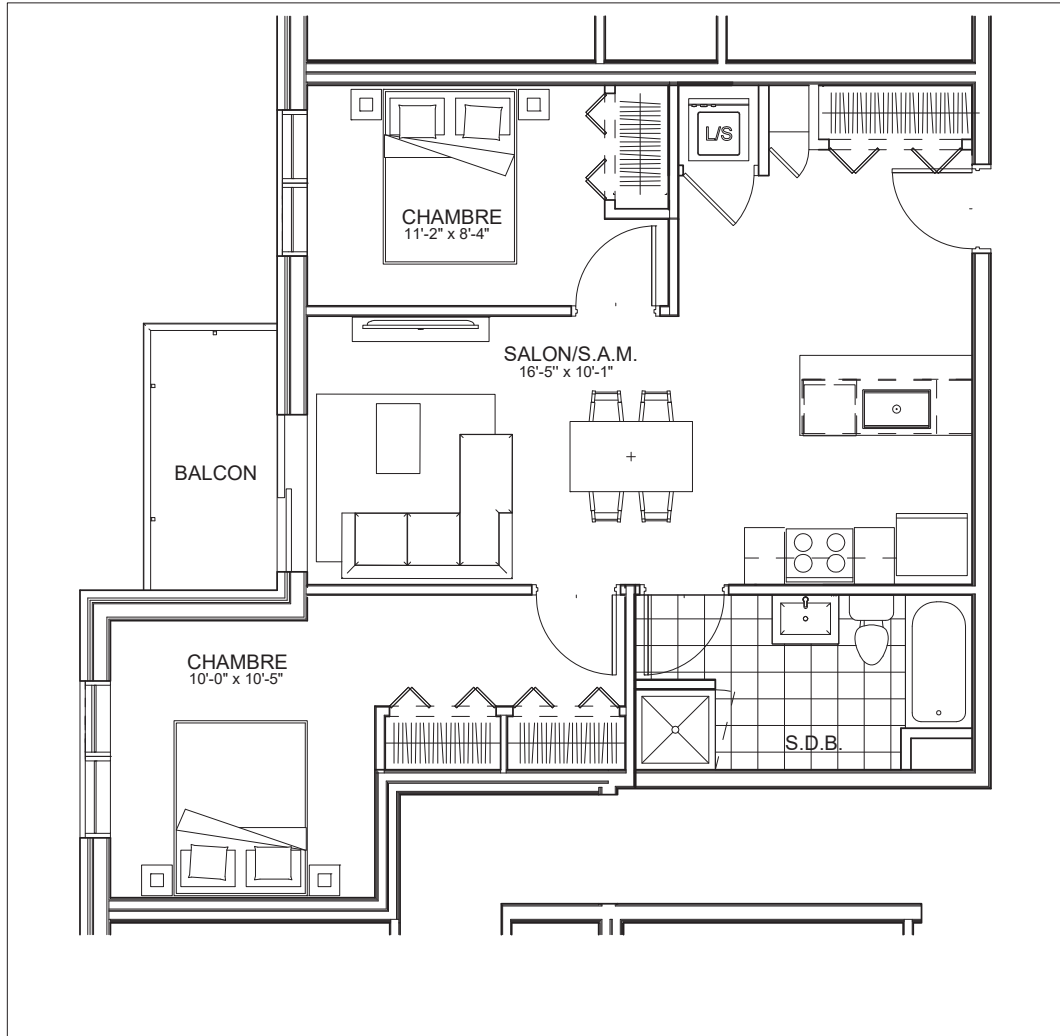




C É L E S T E

APPARTEMENTS LOCATIFS MODERNES

A213



INCLUS*

- 5 APPAREILS ELECTROMENAGERS
- STORES
- AIR CLIMATISE

*CHOIX DU PROPRIETAIRE

OPTIONS NON INCLUSES

- STATIONNEMENT INTERIEUR 75\$ X 12
- GYM / LOGE 15\$ X 12
- CASIER 12\$ X 12

NOTES:

