

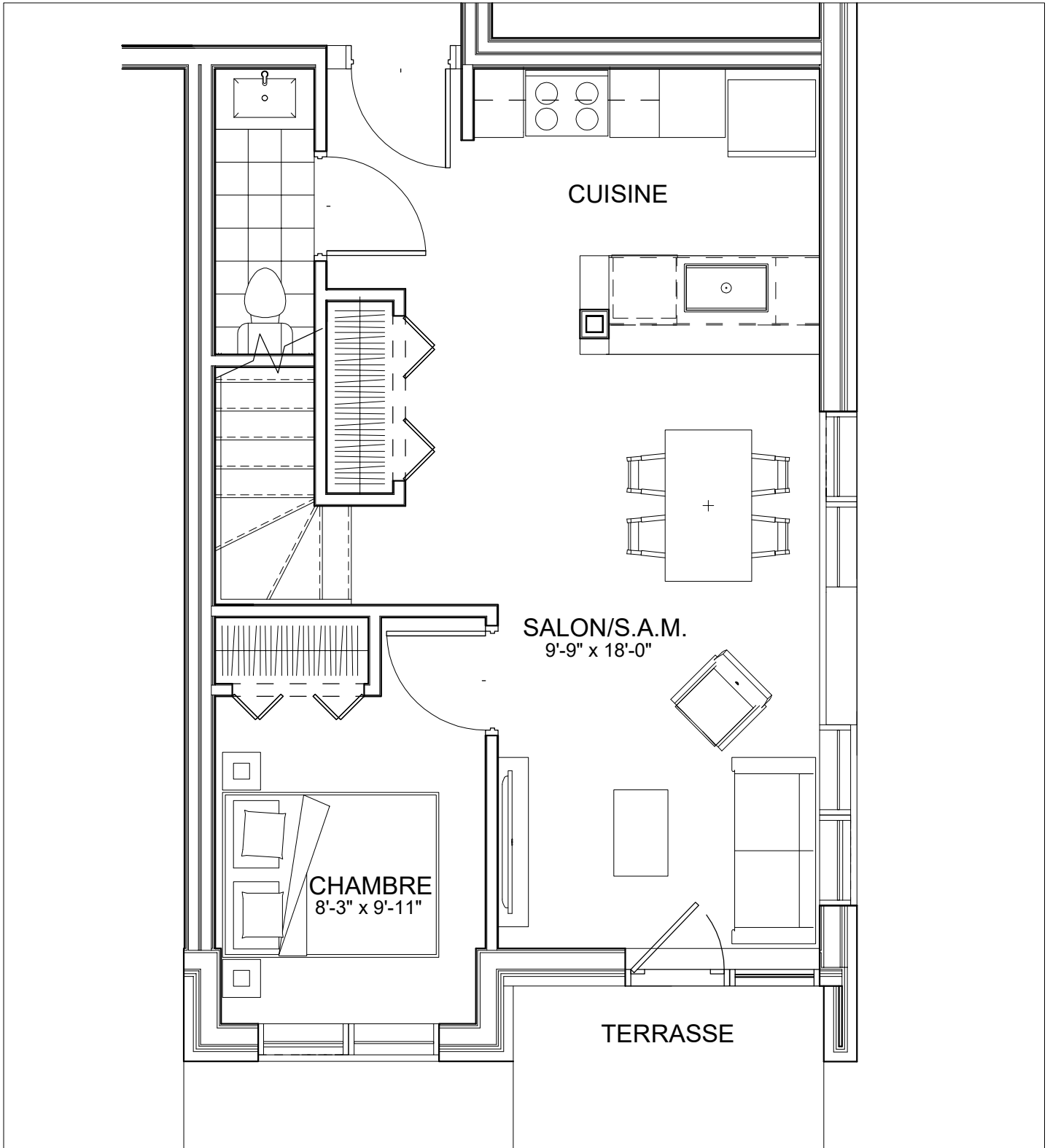


C É L E S T E

APPARTEMENTS LOCATIFS MODERNES

# A 109

A-M101



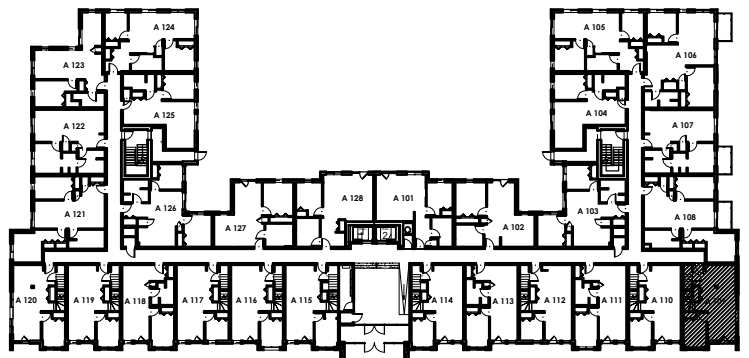
### INCLUS\*

- 5 APPAREILS ELECTROMENAGERS
- STORES
- AIR CLIMATISE

\*CHOIX DU PROPRIETAIRE

### OPTIONS NON INCLUSES

- STATIONNEMENT INTERIEUR 75\$ X 12
- GYM / LOGE 15\$ X 12
- CASIER 12\$ X 12



### NOTES: